

STRAILgrid Installation Instructions



Subject to technical changes / April 2015 / TWU



STRAIL® level crossing systems / STRAILastic track damping systems

KRAIBURG STRAIL® GmbH & Co. KG • D-84529 Tittmoning • Goellstrasse 8

Phone + 49(0)8683/701-0 • Fax -126 • info@strail.de • www.strail.com • www.strailastic.com

STRAIL® level crossings have been in use worldwide since 1976 and have certainly proven themselves. Our know-how as a rubber processor and our expertise for the special needs of railway operators have made us to one of the leading manufacturers of level crossings of this kind. By choosing STRAIL® you can be sure to get a technically mature system which is suitable for everyday use and which ensures a safe crossing of the tracks for many years.

If these installation instructions are not observed and if materials are used which have not been supplied by the manufacturer as accessories, the warranty granted by the manufacturer will become void.

The STRAILgrid – System



Trespassing tracks can be dangerous for people and animals.

It can also result in delays of railway traffic because trains are forced to stop. Moreover, it sometimes even leads to unnecessary accidents.

The solution is > STRAILgrid – the universal panel with many benefits.

Its main task is to prevent people and animals from trespassing the tracks.

In special cases such as installations on platform edges, please contact the responsible person at STRAIL®

1 / PROPERTIES

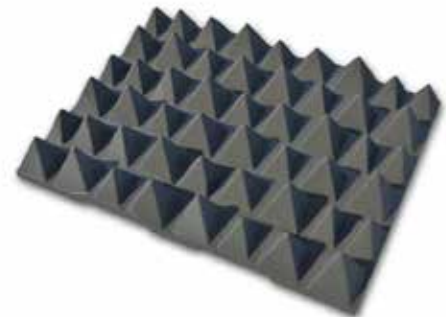
- Dimensions of universal panel: approx. 1.125 x 900 x 174 mm (L x W x H)
- Weight of universal panel: approx. 74 kg
- Weight of intermediate element: approx. 5.3 kg (incl. fixing element standard)
- Weight of fixing element short: approx. 2 kg
- Material universal panel: vulcanised rubber
- Material intermediate element: vulcanised rubber
- Material fixing element: recycled plastic
- Resistance: resistant against chemicals and environmental influences
- Geometry of surface: pyramid points in three different heights, staggered in rows
very rough, uneven, irregular surface
- Height of pyramid points (universal panel): approx. between 11 and 14.5 cm (measured from the lower edge of the respective pyramid point)
- Colour: black

Components

- Universal panel
- Intermediate element with fixing element
- Fixing elements
- Self-tapping hexagon screws

Necessary tools

- Cordless screwdriver with socket wrench size 3/8"
- Ballast fork



Universal panel



Intermediate element with fixing element

2 / INSTALLATION

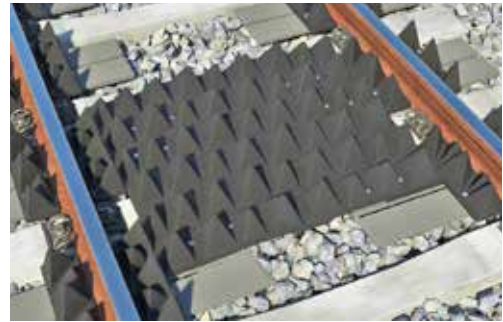
Installing the intermediate elements

- When the intermediate elements are supplied, the fixing elements are already pre-assembled.
- Place one intermediate element on the outer side and one intermediate element on the inner side of the sleeper bay. Slide the intermediate element under the rail (the long side of the fixing element must face forward). If necessary, remove ballast to properly place the intermediate elements.
- Push the elements under the rail until they touch the rail foot.
- Connect the elements with two screws.
- If necessary, adjust the ballast under the elements (to allow them to touch the rail foot).
- Repeat those steps for the entire length of the section.



Installing the universal panels on the inner side

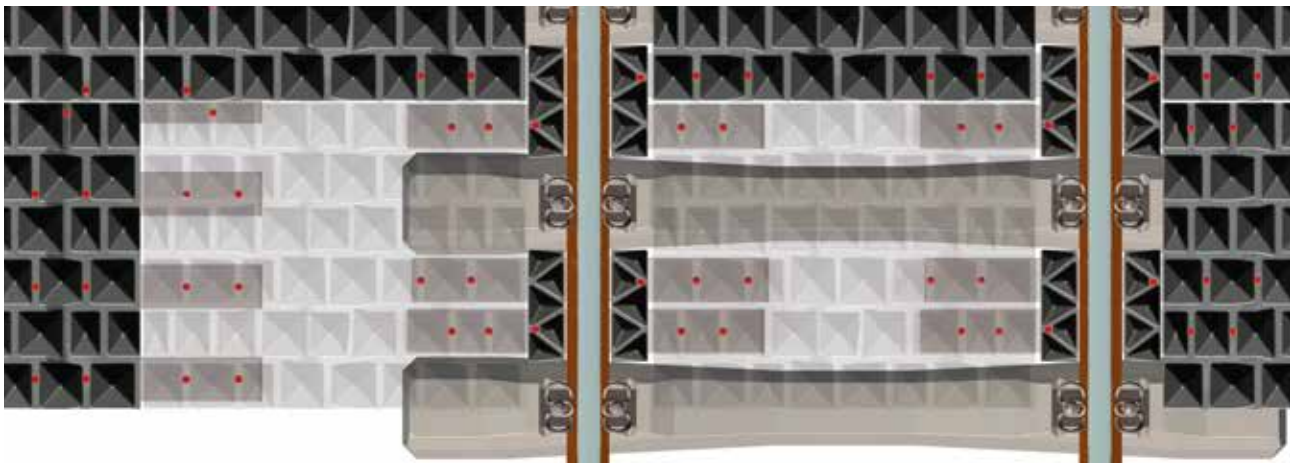
- After installing all intermediate elements, you can begin with placing the universal panels. The panels have four integrated grip recesses so that they can be easily carried by hand.
- Place the first panel on one side of the area which you want to cover. Make sure that the edge of the panel lies against the middle of the sleeper.
- Fix the universal panel with two screws per fixing element (12 screws in total)



NOTE: In order to prevent the panels from shifting, first install and firmly fix one panel before placing another one next to it.

- After installing and fixing one panel, take the next one and place it firmly against the end of the first panel (it has to lay firmly against it). Then, install it using the 12 screws.

CAUTION! Make sure that the screws are positioned and fastened in the middle of the fixing element.



Installing the universal panels on the outer side

- Place the panel on the outer side of the intermediate elements. Make sure that one edge lies against the middle of the sleeper.
- Fix the panel with two screws per fixing element (see picture for correct position).
- For covering further areas near the tracks, use three fixing elements each but no intermediate elements for connection. However, they are also screwed together with two screws per element.



CAUTION > There is risk of falling due to the uneven surface!
Be careful and make sure to have a firm stand during all work steps!

NOTE

Please read these installation instructions carefully and install your STRAILgrid system according to our manufacturer's guidelines. Alternatively, you can contact our assembly team. We only assume guarantee and liability when our installation instructions have been observed. This data sheet is only valid in its current version and is not updated automatically.